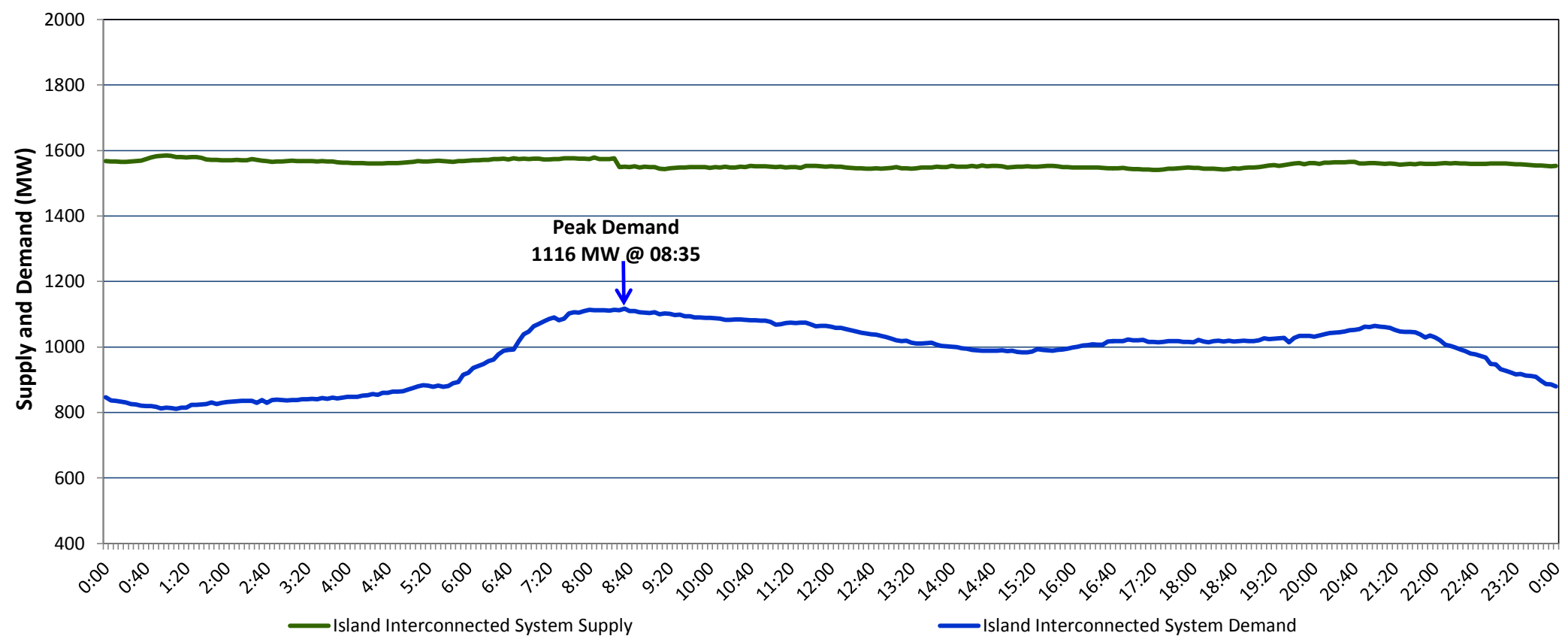


**Newfoundland Labrador Hydro (NLH)
Supply and Demand Status Report Filed Wednesday, May 10, 2017**

**Section 1
Island Interconnected System Supply and Demand
Actual 24 Hour System Performance For Tuesday, May 09, 2017**



Supply Notes For May 09, 2017

- 1,2
- A As of 1520 hours, April 19, 2017, Hawke's Bay Diesel Plant available at 2.5 MW (5 MW).
 - B As of 0855 hours, May 01, 2017, Holyrood Unit 2 unavailable 165 MW (170 MW).
 - C As of 2003 hours, May 03, 2017, Bay d'Espoir Unit 3 unavailable due to planned outage (76.5 MW).
 - D As of 0900 hours, May 04, 2017, Holyrood Unit 1 available at 120 MW (170 MW).
 - E As of 0818 hours, May 07, 2017, Holyrood Unit 3 available at 143 MW (150 MW).
 - F As of 1510 hours, May 07, 2017, Bay d'Espoir Unit 4 unavailable due to planned outage (76.5 MW).
 - G **At 0830 hours, May 09, 2017, Stephenville Gas Turbine unavailable due to planned outage 25 MW (50 MW).**

**Section 2
Island Interconnected Supply and Demand**

Wed, May 10, 2017	Island System Outlook ³	Seven-Day Forecast	Temperature (°C)		Island System Daily Peak Demand (MW) Forecast
			Morning	Evening	
Available Island System Supply: ⁵	1,565 MW	Wednesday, May 10, 2017	3	2	1,145
NLH Generation: ⁴	1,265 MW	Thursday, May 11, 2017	2	2	1,155
NLH Power Purchases: ⁶	100 MW	Friday, May 12, 2017	2	0	1,095
Other Island Generation:	200 MW	Saturday, May 13, 2017	1	2	1,110
Current St. John's Temperature:	1 °C	Sunday, May 14, 2017	2	4	995
Current St. John's Windchill:	N/A °C	Monday, May 15, 2017	4	4	1,010
7-Day Island Peak Demand Forecast:	1,155 MW	Tuesday, May 16, 2017	5	5	980

Supply Notes For May 10, 2017

- 3
- H **At 0750 hours, May 10, 2017, Holyrood Unit 3 available at 147 MW (150 MW).**

- Notes:
1. Generation outages for running and corrective maintenance are included. These are not unusual for power system operations. They generally do not impact customer supply. The power system operators schedule outages to system equipment whenever possible to coincide with periods when customer demands are low and sufficient supply reserves are available. However, from time to time equipment outages are necessary and reserves may be impacted.
 2. Due to the Island Interconnected System being isolated from the larger North American grid, when there is a sudden loss of large generating units some customer's load must be interrupted for short periods to bring generation output equal to customer demand. This automatic action of power system protection, referred to as under frequency load shedding, is necessary to ensure the integrity and reliability of system equipment. Under frequency events typically occur 5 to 8 times per year on the Island Interconnected System and the resultant customer load interruptions are generally less than 30 minutes.
 3. As of 0800 Hours.
 4. Gross output including station service at Holyrood (24.5 MW) and improved NLH hydraulic output due to water levels (35 MW).
 5. Gross output from all Island sources (including Note 4).
 6. NLH Power Purchases include: CBPP Co-Gen, Nalcor Exploits, Rattle Brook, Star Lake, Vale capacity assistance (when applicable), and Wind Generation.

**Section 3
Island Peak Demand Information
Previous Day Actual Peak and Current Day Forecast Peak**

Tue, May 09, 2017	Actual Island Peak Demand ⁸	08:35	1,116 MW
Wed, May 10, 2017	Forecast Island Peak Demand		1,145 MW

- Notes: 8. Island Demand is supplied by NLH generation and purchases, plus generation owned and operated by Newfoundland Power and Corner Brook Pulp & Paper (Deer Lake Power, DLP).